

convene → connect → measure → sustain →

Boston Re-Engagement Center

March 2018



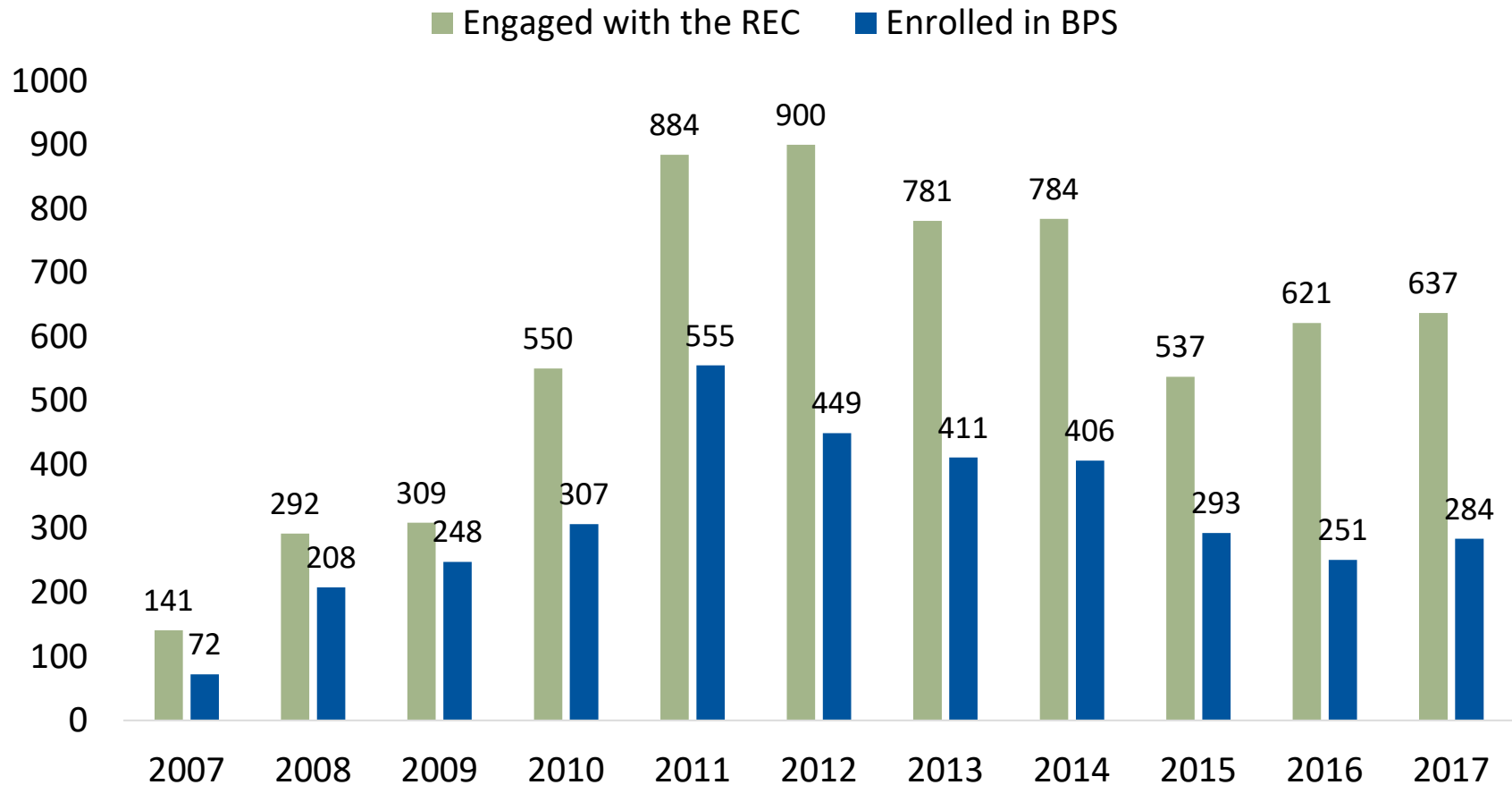
BOSTON PRIVATE INDUSTRY COUNCIL

Boston Re-Engagement Center

- ▶ The Re-Engagement Center (REC) provides one central location for students to access the resources and counseling that they need to re-enroll in school or transfer to an alternative education program and get back on track to graduation. One of the first programs of its kind nationwide, the REC has found that dropouts want to come back to school and can succeed when they're given the right support. It is a partnership between the Boston Public Schools and the PIC.
- ▶ For more information about the program, contact Emmanuel Allen, Re-Engagement Center Manager, at Emmanuel.allen@bostonpic.org or 617-488-1331
- ▶ For more information about dropout rates and research related to the REC, contact Anika Van Eaton, Senior Research Analyst, at anika.vaneaton@bostonpic.org or 617-488-1362.



Youth engaged and placed, by year



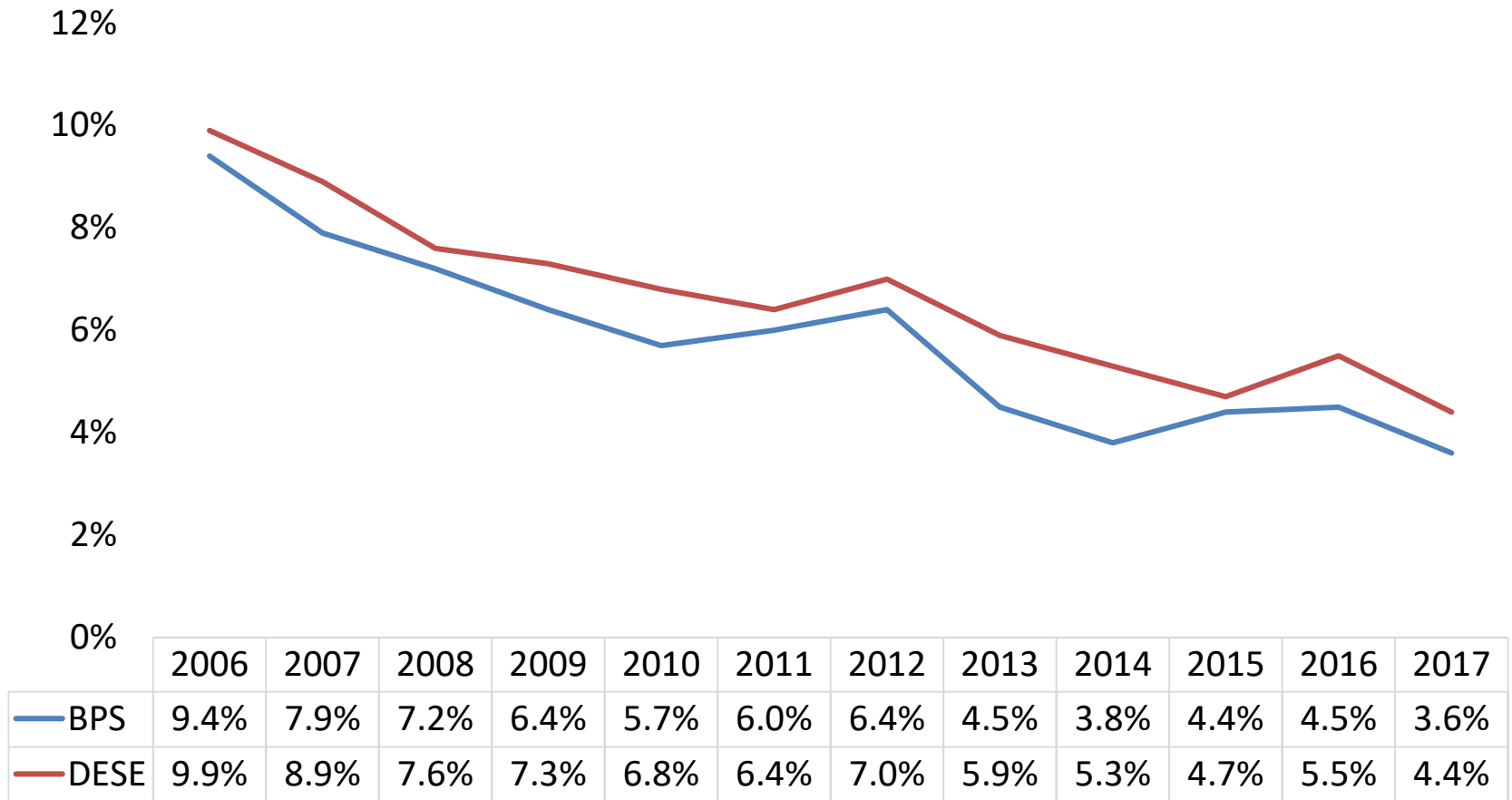
Notes: "Making initial engagement" are students who complete an initial intake with REC staff

Source: Boston PIC Re-Engagement Center



BOSTON PRIVATE INDUSTRY COUNCIL

Boston Public Schools District, annual dropout rates, 2006 to 2017

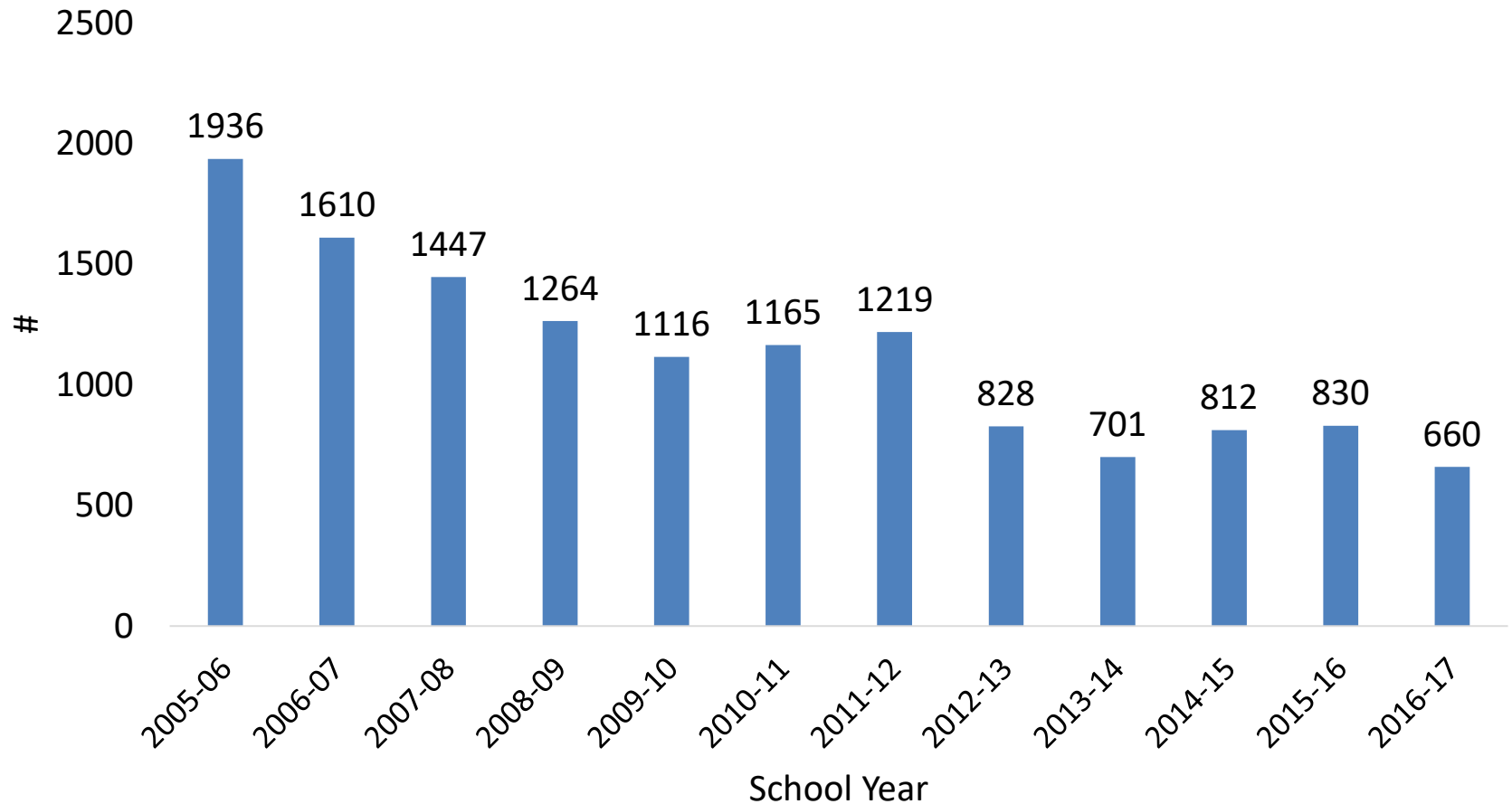


Source: Boston Public Schools (BPS); Department of Elementary and Secondary Education (DESE)



BOSTON PRIVATE INDUSTRY COUNCIL

Boston Public Schools District, number of students dropping out of high school, 2006 to 2017



Source: Boston Public Schools (BPS)

