

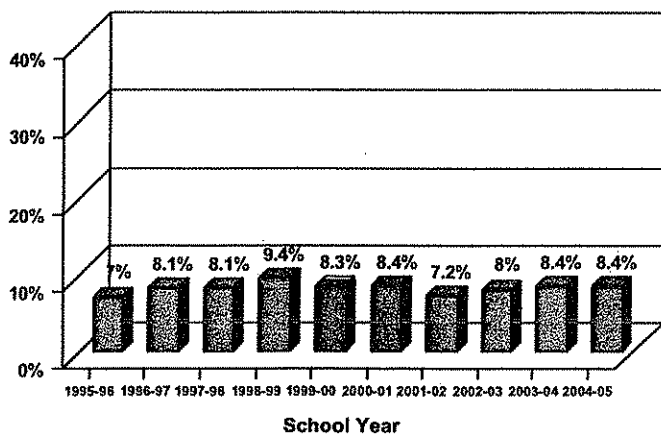
# Q and A

## Boston Public Schools 2004-2005: Student Dropout

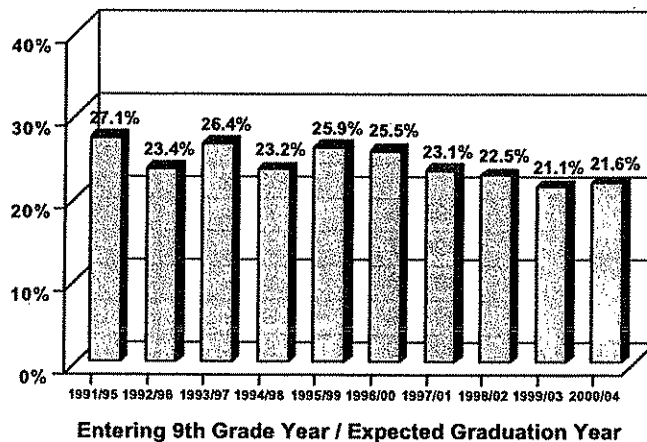
This document presents answers to some of the most frequently asked questions about student dropout in the Boston Public Schools. As defined by the Massachusetts Department of Education and the National Center for Education Statistics, a student is considered to be a dropout at the end of the school year if he or she is not in school, has not graduated, and has not transferred to another school system. Each such student represents a lost opportunity both for the student and for the schools.

### How Have Systemwide Dropout Rates Varied Over Time?

**Annual Dropout Rates\* Systemwide: Grades 9-12**



**Ninth Grade Cohort Dropout Rates Systemwide**



- The annual rate analysis answers the question, "How many students in grades 9-12 drop out in one year?"
- The 9<sup>th</sup>-12<sup>th</sup> grade annual dropout rate in 2004-2005 (8.4%) remains the same as the previous year and is below the highest point of 9.4% in 1998-1999.

- The cohort rate analysis answers the question, "Of the students who began 9<sup>th</sup> grade, what proportion dropped out over the next five years?"
- The 9<sup>th</sup> grade cohort dropout rate increased slightly for the 2000/04 cohort (21.6%) after having reached its lowest point in the preceding cohort year.
- Historically, the cohort dropout rate has declined substantially since its high point of 39.6% among the students in the 1983/1987 cohort.

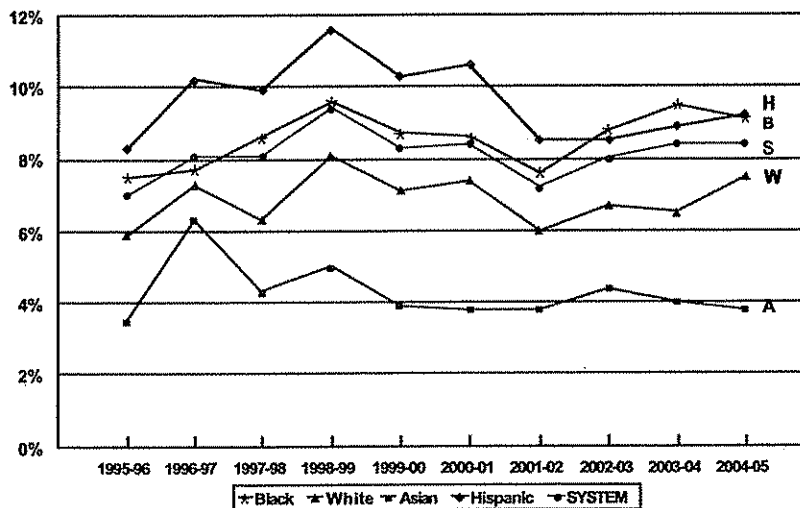
\* Final annual dropout rates are reported in this document. These final dropout rates differ from the June rates shown in the School Report Cards (formerly called 'Report on Teaching and Learning') because they account for changes in student status between June and the following October. This is done to conform with Massachusetts Department of Education guidelines. It should be noted that from the 2003-04 year onward, the student status reported in the next school year October 1 SIMS is used for the adjustment rather than identified by school personnel via a survey as done in the previous years.

# Q and A

## Boston Public Schools 2004-2005: Student Dropout

### How Have Systemwide Dropout Rates Varied Over Time by Racial/Ethnic Group?

**Annual Dropout Rate by Racial/Ethnic Group:  
1995-96 through 2004-05**



	Black	White	Asian	Hispanic	SYSTEM
1995-96	7.5%	5.9%	3.5%	8.3%	7.0%
1996-97	7.7%	7.3%	6.3%	10.2%	8.1%
1997-98	8.6%	6.3%	4.3%	9.9%	8.1%
1998-99	9.6%	8.1%	5.0%	11.6%	9.4%
1999-00	8.7%	7.1%	3.9%	10.3%	8.3%
2000-01	8.6%	7.4%	3.8%	10.6%	8.4%
2001-02	7.6%	6.0%	3.8%	8.5%	7.2%
2002-03	8.8%	6.7%	4.4%	8.5%	8.0%
2003-04	9.5%	6.5%	4.0%	8.9%	8.4%
2004-05	9.1%	7.5%	3.8%	9.2%	8.4%

- There have been year to year fluctuations in annual dropout rates in all groups.
- 1995-1996 had the lowest dropout rate in the time period for all groups.
- Between 2003-2004 and 2004-2005, while Whites and Hispanics showed a slight increase in dropout, Blacks and Asians showed a slight decline.
- There was a consistent relationship in dropout rates across the groups: Asians lowest, then Whites, then Blacks, and Hispanics highest except the previous two years where Blacks was the highest.

### How Do Dropout Rates Vary by Racial/Ethnic Group and Gender?

**Annual Dropout Rate by Racial/Ethnic Group and Gender: Grades 9-12, 2004-2005**

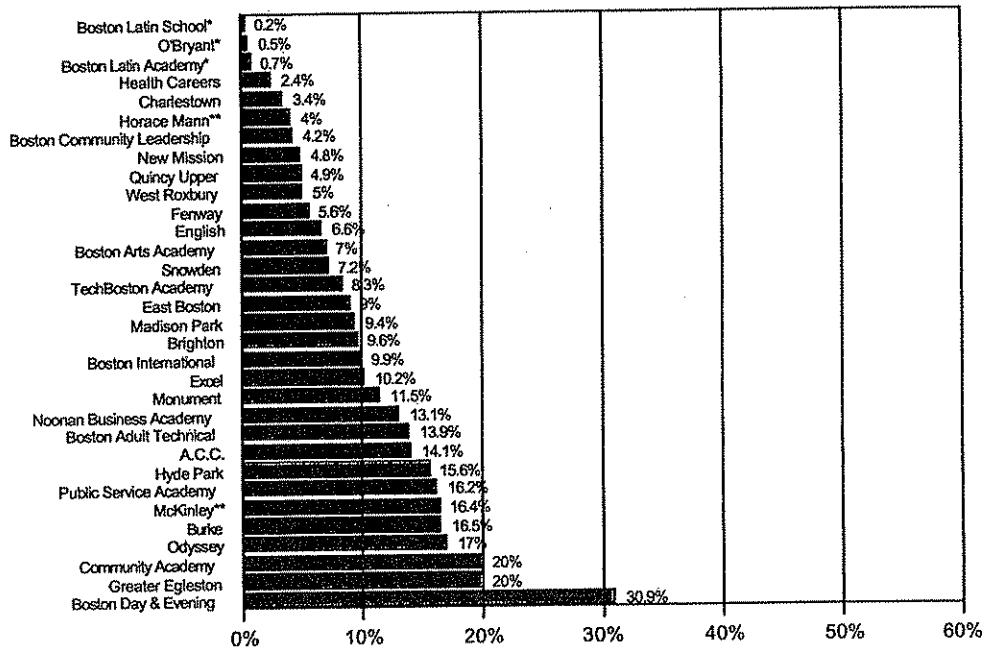
	Overall		Male		Female	
	Percent	Number	Percent	Number	Percent	Number
Black	9.1%	887	10.6%	510	7.6%	377
White	7.5%	226	7.7%	118	7.3%	108
Asian	3.8%	69	4.7%	43	2.9%	26
Hispanic	9.2%	510	11.0%	304	7.4%	206
TOTALS**	8.4%	1,699	9.7%	979	7.1%	720

\*\* Totals include 6 Native Americans and one Multiracial dropouts who are not shown separately by gender because their numbers are so few.

- In all groups, more males than females dropped out.
- Dropout is lowest among Asian students and highest among male Hispanics.
- Gender difference are slight more pronounced among Black and Hispanic students.

### How do Dropout Rates Differ Across Schools/Programs?

**Annual Dropout Rate by School: Grades 9-12, 2004-05**



\* Examination School \*\* Special Needs School  
Students who dropped out are attributed to the last school to which they were assigned.

- Dropout rates vary substantially across schools/programs.
- Dropout rates range from a low of 0.2% to a high of 30.9%.
- School enrollments in grades 9-12 ranged from 25 to over 1,700.

### How do Dropout Rates Vary Across Neighborhoods?

**Annual Dropout Rate by Neighborhood (Zip Code):  
Grades 9-12, 2004-2005**

- Dropout rates vary substantially according to where students live.
- The percentage of dropouts varies from a low of 2.9% in West Roxbury to a high of 9.9% in Uphams Corner.
- There is also much variation in the numbers of students from each neighborhood who are attending Boston Public Schools.

	Percent	Number	Students in Neighborhood
Allston	8.1%	23	285
Back Bay/Kenmore*	8.8%	36	408
Boston Central**	3.7%	10	271
Brighton	8.3%	47	568
Charlestown	9.1%	37	407
Codman Square	9.4%	263	2812
East Boston	8.2%	130	1583
Fields Corner	9.3%	111	1199
Grove Hall	9.5%	167	1751
Hyde Park	6.6%	83	1254
Jamaica Plain	9.6%	101	1056
Mattapan	9.4%	145	1547
Roslindale	5.3%	76	1435
Roxbury	8.0%	113	1407
Roxbury Crossing	8.8%	48	544
South Boston	8.9%	61	687
South End	7.6%	52	684
Uphams Corner	9.9%	177	1789
West Roxbury	2.9%	15	518

\* 02115, 02116, 02215, 02199  
\*\* 02108 through 02111, 02113, 02114, 02210 (Downtown, West End, North End, Chinatown)

## Boston Public Schools Annual Dropout by Racial/Ethnic Group and Systemwide: 1977-1978 through 2004-2005: Grades 9-12\*

	Black		White		Asian		Hispanic		Native American		Systemwide	
	Percent	Number	Percent	Number	Percent	Number	Percent	Number	Percent	Number	Percent	Number
2004-2005****	9.1%	[887/9789]	7.5%	[226/3029]	3.8%	[69/1806]	9.2%	[510/5551]	8.1%	[6/74]	8.4%	[1699/20254]
2003-2004****	9.5%	[932/9845]	6.5%	[197/3036]	4.0%	[75/1864]	8.9%	[463/5201]	9.7%	[7/72]	8.4%	[1674/20018]
2002-2003****	8.8%	[872/9932]	6.7%	[203/3033]	4.4%	[82/1855]	8.5%	[404/4774]	11.4%	[8/70]	8.0%	[1569/19664]
2001-2002****	7.6%	[756/9923]	6.0%	[185/3065]	3.8%	[73/1924]	8.5%	[395/4629]	9.1%	[7/77]	7.2%	[1416/19618]
2000-2001****	8.6%	[824/9625]	7.4%	[225/3059]	3.8%	[71/1883]	10.6%	[469/4416]	7.2%	[5/64]	8.4%	[1594/19052]
1999-2000****	8.7%	[839/9624]	7.1%	[221/3103]	3.9%	[72/1862]	10.3%	[451/4394]	8.2%	[5/61]	8.3%	[1588/19044]
1998-1999****	9.6%	[899/9337]	8.1%	[254/3153]	5.0%	[92/1840]	11.6%	[498/4288]	10.9%	[6/55]	9.4%	[1749/18673]
1997-1998****	8.6%	[781/9088]	6.3%	[194/3094]	4.3%	[76/1769]	9.9%	[416/4188]	13.5%	[7/52]	8.1%	[1474/18191]
1996-1997****	7.7%	[683/8890]	7.3%	[227/3096]	6.3%	[113/1794]	10.2%	[421/4140]	8.2%	[4/49]	8.1%	[1448/17969]
1995-1996****	7.5%	[649/8626]	5.9%	[182/3102]	3.5%	[62/1796]	8.3%	[325/3925]	13.0%	[7/54]	7.0%	[1225/17505]
1994-1995**	9.7%	[822/8501]	7.2%	[220/3055]	5.4%	[99/1837]	10.4%	[393/3773]	7.0%	[3/43]	8.9%	[1537/17209]
1993-1994**	8.1%	[682/8412]	8.6%	[274/3192]	4.3%	[81/1880]	10.3%	[382/3697]	22.4%	[11/49]	8.3%	[1430/17230]
1992-1993**	9.0%	[745/8319]	8.5%	[284/3328]	3.4%	[65/1888]	10.6%	[379/3567]	21.4%	[12/56]	8.7%	[1485/17158]
1991-1992**	9.5%	[787/8323]	8.5%	[281/3313]	7.4%	[140/1898]	13.1%	[451/3448]	11.8%	[6/51]	9.8%	[1655/17033]
1990-1991**	10.3%	[848/8199]	7.6%	[251/3292]	4.8%	[88/1816]	13.5%	[432/3211]	10.0%	[6/60]	9.8%	[1625/16578]
1989-1990**	10.3%	[833/8118]	9.2%	[319/3485]	5.6%	[98/1753]	13.8%	[409/2971]	15.3%	[9/59]	10.2%	[1668/16386]
1988-1989	11.2%	[929/8330]	10.7%	[406/3799]	4.7%	[76/1628]	14.7%	[412/2808]	10.0%	[7/70]	11.0%	[1830/16635]
1987-1988	13.5%	[1145/8502]	13.0%	[541/4156]	6.3%	[97/1545]	17.7%	[481/2713]	16.4%	[12/73]	13.4%	[2276/16989]
1986-1987	13.4%	[1167/8735]	14.3%	[659/4621]	8.0%	[123/1536]	18.0%	[482/2678]	17.6%	[13/74]	13.9%	[2444/17644]
1985-1986	14.4%	[1293/8963]	14.9%	[738/4944]	9.4%	[140/1496]	18.9%	[493/2605]	15.6%	[10/64]	14.8%	[2674/18072]
1984-1985	17.0%	[1637/9644]	16.9%	[923/5465]	9.7%	[150/1542]	22.9%	[582/2537]	20.0%	[13/65]	17.2%	[3302/19253]
1983-1984	15.4%	[1500/9711]	16.5%	[922/5582]	12.2%	[175/1440]	19.8%	[470/2379]	31.3%	[25/80]	16.1%	[3092/19192]
1982-1983	14.3%	[1433/10008]	16.3%	[1033/6333]	11.8%	[172/1462]	16.8%	[377/2238]	11.9%	[10/84]	15.0%	[3025/20125]
1981-1982	11.5%	[1161/10073]	13.3%	[936/7047]	13.4%	[195/1456]	15.2%	[325/2139]	13.9%	[11/79]	12.6%	[2628/20794]
1980-1981	10.4%	[1043/10009]	11.5%	[873/7624]	6.2%	[71/1141]	16.6%	[348/2101]	6.0%	[5/84]	11.2%	[2340/20959]
1979-1980	12.4%	[1214/9779]	13.2%	[1065/8039]	6.0%	[57/947]	18.5%	[374/2025]	17.5%	[14/80]	13.1%	[2724/20870]
1978-1979	12.8%	[1220/9519]	13.6%	[1144/8420]	5.4%	[43/790]	17.1%	[325/1899]	16.3%	[15/92]	13.3%	[2747/20720]
1977-1978	10.6%	[985/9284]	11.2%	[1032/9180]	2.6%	[19/722]	15.4%	[265/1717]	14.1%	[11/78]	11.0%	[2312/20981]

\* Transfers from BPS are excluded from these analyses. Dropout rates, number of dropouts, and total populations are shown for each group.  
 \*\* New methods of counting and reporting dropouts were introduced in 1991-1992 to conform to new guidelines from the Massachusetts Department of Education and the National Center for Educational Statistics. In order to present consistent historical data, the dropout data were recalculated back to 1989-1990 according to the new methods. The impact of the changes was relatively small (less than one percentage point), but the changes do mean that the data for years before 1989-1990 are not directly comparable with the data from more recent years. Note: Effective in 1993-1994, the discharge code '28' ("Special Services", such as commitment to DYS with participation in an approved educational program) is no longer considered a dropout discharge code.  
 \*\*\* For annual rate data from 1995-1996 on, BPS accounts for "returned dropouts" who re-enroll by the following October 1 or process a request to transfer out of the system. 1995-1996 and later data are therefore not directly comparable with data from earlier years.  
 \*\*\*\* Beginning from 2004-05, students who turn age of 22 are counted as "Other Loss" rather than dropouts. Also, as results of the revised federal government's reporting categories on student race codes, "Multiracial" category is added. "Multiracial" refers to any student with multiple non-Hispanic race/ethnic codes. Dropout rate for "Multiracial" student group is not reported because it has fewer than 10 students.

## Boston Public Schools Dropout by Racial/Ethnic Group for 9th Grade Cohorts: 1979/83 through 2000/04

	Black		White		Asian		Hispanic		Native American		Systemwide	
	Percent	Number	Percent	Number	Percent	Number	Percent	Number	Percent	Number	Percent	Number
2000/04***	23.8%	[459/1932]	17.6%	[114/646]	7.6%	[29/380]	25.0%	[245/979]	**	[6/15]	21.6%	[853/3952]
1999/03*	20.7%	[422/2036]	19.9%	[141/707]	10.7%	[42/394]	26.9%	[256/953]	**	[5/17]	21.1%	[866/4107]
1998/02*	23.3%	[451/1939]	20.9%	[139/665]	8.0%	[32/402]	28.4%	[260/914]	**	[3/13]	22.5%	[885/3933]
1997/01*	24.1%	[456/1889]	18.3%	[121/662]	10.7%	[40/374]	29.4%	[266/906]	**	[4/12]	23.1%	[887/3843]
1996/00*	25.2%	[460/1822]	22.2%	[142/641]	12.3%	[43/350]	33.4%	[303/907]	**	[4/9]	25.5%	[952/3729]
1995/99*	27.3%	[498/1821]	21.6%	[148/686]	14.6%	[55/378]	31.3%	[268/855]	**	[4/13]	25.9%	[973/3753]
1994/98*	23.9%	[417/1744]	21.0%	[139/661]	9.2%	[31/338]	29.1%	[239/821]	**	[3/9]	23.2%	[829/3573]
1993/97*	27.3%	[458/1678]	24.1%	[142/588]	12.0%	[39/324]	32.7%	[242/471]	**	[2/9]	26.4%	[883/3340]
1992/96*	25.9%	[415/1602]	20.8%	[144/692]	11.5%	[39/338]	25.7%	[189/736]	**	[6/14]	23.4%	[793/3382]
1991/95*	26.2%	[447/1703]	25.4%	[178/702]	12.3%	[41/334]	37.3%	[269/721]	**	[4/11]	27.1%	[939/3471]
1990/94*	26.6%	[422/1585]	27.2%	[182/670]	13.7%	[39/285]	33.8%	[230/680]	**	[7/12]	27.2%	[880/3232]
1989/93*	25.6%	[408/1593]	25.2%	[174/691]	13.3%	[44/332]	38.8%	[264/680]	**	[6/11]	27.1%	[896/3307]
1988/92*	28.9%	[490/1698]	27.7%	[220/794]	9.9%	[34/343]	36.4%	[220/604]	**	[8/15]	28.1%	[972/3454]
1987/91*	31.0%	[515/1663]	29.0%	[238/822]	15.2%	[53/348]	40.5%	[244/602]	**	[9/19]	30.7%	[1059/3454]
1986/90*	33.5%	[608/1814]	31.3%	[287/916]	17.4%	[58/333]	39.9%	[252/631]	**	[8/15]	32.7%	[1213/3709]
1985/89*	31.6%	[577/1825]	33.3%	[337/1013]	17.8%	[53/297]	44.2%	[275/622]	**	[4/14]	33.0%	[1246/3771]
1984/88*	35.6%	[699/1964]	37.9%	[447/1180]	20.7%	[63/305]	48.5%	[311/641]	**	[9/18]	37.2%	[1529/4108]
1983/87*	37.0%	[719/1942]	40.8%	[468/1147]	22.7%	[68/299]	53.8%	[314/584]	**	[9/16]	39.6%	[1578/3988]
1982/86*	38.8%	[819/2111]	40.6%	[516/1271]	24.3%	[72/296]	49.1%	[272/554]	**	[7/19]	39.7%	[1686/4251]
1981/85*	36.5%	[794/2175]	40.0%	[606/1514]	29.3%	[79/270]	49.9%	[254/509]	**	[10/19]	38.8%	[1743/4487]
1980/84*	35.2%	[834/2370]	38.4%	[628/1636]	21.6%	[54/250]	48.3%	[243/503]	**	[4/16]	36.9%	[1763/4775]
1979/83*	33.0%	[720/2179]	33.5%	[574/1712]	12.9%	[26/202]	42.5%	[214/504]	**	[4/7]	33.3%	[1538/4614]

\* The beginning (9th grade) year (for September) is shown along with the expected year of graduation for the cohort. Dropout rates, number of dropouts, and total populations are shown for each group.

\*\* The numbers of Native Americans are too small to permit reliable comparison of percentages. \*\*\* Beginning from 2004-05, students who turn age of 22 are counted as "Other Loss" rather than dropouts. Also, as results of the revised federal government's reporting categories on student race codes, "Multiracial" category is added. "Multiracial" refers to any student with multiple non-Hispanic race/ethnic codes. Dropout rate for "Multiracial" student group is not reported because it has fewer than 10 students.

Note: In 1991-1992 and again in 1995-1996 there were changes in the procedures for counting dropouts which were introduced to conform to guidelines from the Massachusetts Department of Education and the National Center for Educational Statistics. Because of the specifics of how cohorts are defined, these changes had a very small impact on cohort dropout rates. For practical purposes, the data across all years are essentially comparable.

